

**DIRECT SOLENOID VALVE
 SV32**

DESCRIPTION

3/2 way solenoid valves are available as single station units and they are designed for use with compressed air, mainly applied where on-off control is required with pneumatic actuators.

OPTIONS: Other versions under request.
USE: Pneumatic actuator control, among others.

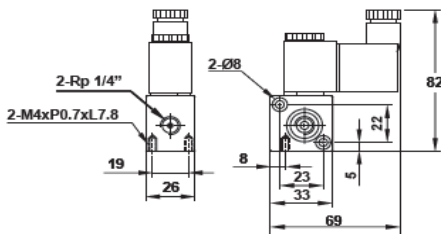
AVAILABLE MODELS: SV32C – direct acting.
 SV32H – pilot operated.

SIZES AND CONNECTIONS: 1/4" female threaded ISO 7 Rp.

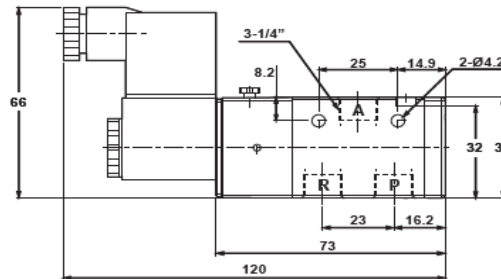
INSTALLATION: In any position.
 See IMI – Installation and maintenance instructions.



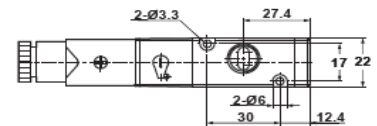
DIMENSIONS



SV32C



SV32H



TECHNICAL DATA

| TYPE | SV32C | SV32H |
|------------------------|----------------------------------|--------------------|
| Body material | Aluminium alloy | |
| Sectional area | 1,5 mm ² | 16 mm ² |
| Action | Direct acting with spring return | Internal pilot |
| Operating pressure | 0 to 8 bar | |
| Maximum proof pressure | 10 bar | |
| Ambient temperature | -10 °C to 60 °C | |
| Duty cycle | 100% ED | |
| Coil type | DIN | |
| Protection class | IP 65 (DIN 40 050) | |
| Insulation class | F | |
| Voltage tolerance | ±10% | |
| Standard voltages | 220 V AC, 110 V AC, 24 V DC | |
| Net weight | 0,16 kg | 0,18 kg |