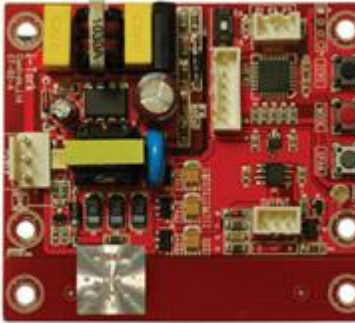


ITQ 0080 > CT



ITQ 0080 Options > CT (Current Transmitter)

- Output Signal 4-20mA DC
- Easy Zero/ Span Push Button Adjustment
- Convertible Dip Switch (4Wires to 2Wires)

Specifications	
Incoming Power	85~265V AC \pm 10 %, 50/ 60Hz \pm 2 %
	Option: 24V DC
Potentiometer (Feedback)	1 Kohm
Output Signal	4~20mA (Option:0-10VDC, 2-10V DC, 1-5V DC, 0-5V DC)
Load Resistance	Min. 100 Ohm ~ Max. 750 Ohm
Visual Indicators	Operating LED (Blue)
Calibration Method	Zero/ Span/Mode Button
User Adjustable Parameters	The Zero and Span buttons are used to make adjustments to current Mode
Dielectric Strength	1,500 V AC 1 min. (Input to Output to Power to Ground)
Insulation Resistance	500 V DC 30 Mohms MIN
Resolution	Min 1/1,000
Ambient Temperature	-10 ~ + 60 °C
Ambient Humidity	90% RH MAX. (Non-Condensing)