

# THE ANSWER TO PROBLEMS OF: CORROSION, ABRASION, CLOGGING, CONTAMINATION, VACUUM & GAS HANDLING

The most common and traditional type. The valves are large to accommodate the yoke and stem mechanism, but fully open the full bore design provides an uninterrupted flow path.

Generally either used fully open or closed, for on/off isolation, and not used for modulating flow control duties.

Variants include Solid and Flexible Wedge Gates, Double Disc Gates, Through Conduit Valves, Parallel Slide Valves and Knife Gate Valves.

## PRODUCT FEATURES

- Heavy duty OS & Y type
- Bolted bonnet, rising stem, non rising hand wheel
- Renewable seating for Carbon Steel Valves, Integral for Stainless Steel Valves
- Piston Lift Check Valves with spring loaded disc
- Class 150, 300, 600, 800, 900, 1500, 2500
- Size from 1/2" through 24"
- Manual lever, Manual Gear and electric operated

## PERFORMANCE FEATURES

- Valves with most advanced design Features provide the ultimate in dependable, economic flow control
- Surface protection for carbon steel Valves, Chlorine free prime coat with modified alkyd resin unobjectionable in physiological and toxicological respects. Additional external coating: Silver Streak aluminium paint/varnish light blue

## BODY & BONNET MATERIALS:

- ASTM A126 CLASS B
- ASTM A216 WCB, A217 WC6, WC9, C5, C12
- ASTM A352 LCB
- ASTM A351 CF8, CF8M, CF3, CF3M
- ASTM A105
- ASTM A182 F11, F22, F5, F9, F304, F316

## WEDGE & SEAT RING MATERIALS:

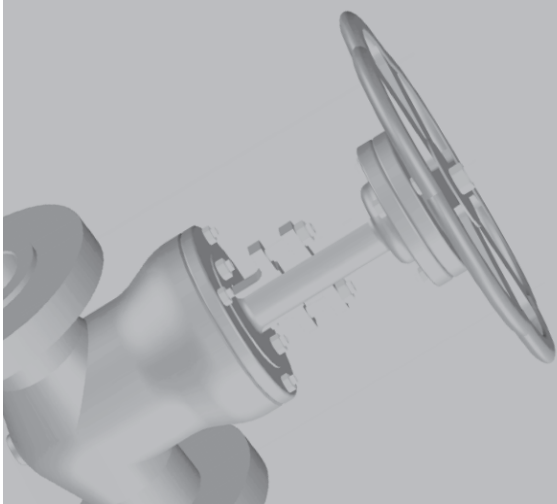
- ASTM A216 WCB+13% Cr. Facing, A217 WC6+Stellited, CA6NM+Stellited
- ASTM A216 WCB, ASTM A217 WC6, A743 CA6NM
- ASTM A217 CA15
- ASTM A276 Type 410, 304, 316
- ASTM A351 CF8, CF8M, CF3, CF3M

## GASKET VALVE MATERIAL

- Spiral Wound 304, 316 with CAF
- Graphite
- PTFE filled

## DESIGN/TESTING APPLICABLE STANDARD

- |                    |                       |
|--------------------|-----------------------|
| - API 6D, API 600  | - API 6D, API 598     |
| - ASME B16.34      | - API 598             |
| - API 602, BS 5352 | - API 598, EN 12266-1 |
| - BS 5150, BS 5152 |                       |



## END CONNECTIONS APPLICABLE STANDARD

- ANSI/ASME B16.5 Flanged Valves
- ANSI/ASME B16.1 Flanged Fittings
- ANSI/ASME B1.20.1 (NPT) Pipe Threads
- ANSI/ASME B16.34 Steel Valves
- ANSI/ASME B16.11 Socketweld Fittings
- ANSI/ASME B16.25 Butt weld Ends

## CERTIFICATES AVAILABLE

- EN 10204 3.1.B
- EN 10204 2.2
- LP/MP TESTS
- GHOST-R

## INSPECTION TESTS AVAILABLE BY

- SGS GLOBAL TRADE SOLUTIONS
- ITS INTERTEK TESTING SERVICES
- BV BUREAU VERITAS

## MAJOR MARKETS SERVED

- |                    |                |                   |
|--------------------|----------------|-------------------|
| - Chemical process | - Mining       | - Pharmaceutical  |
| - Power generation | - Pulp & Paper | - Food & Beverage |
| - Water treatment  | - Nuclear      | - Bioprocess      |

## OPTIONS

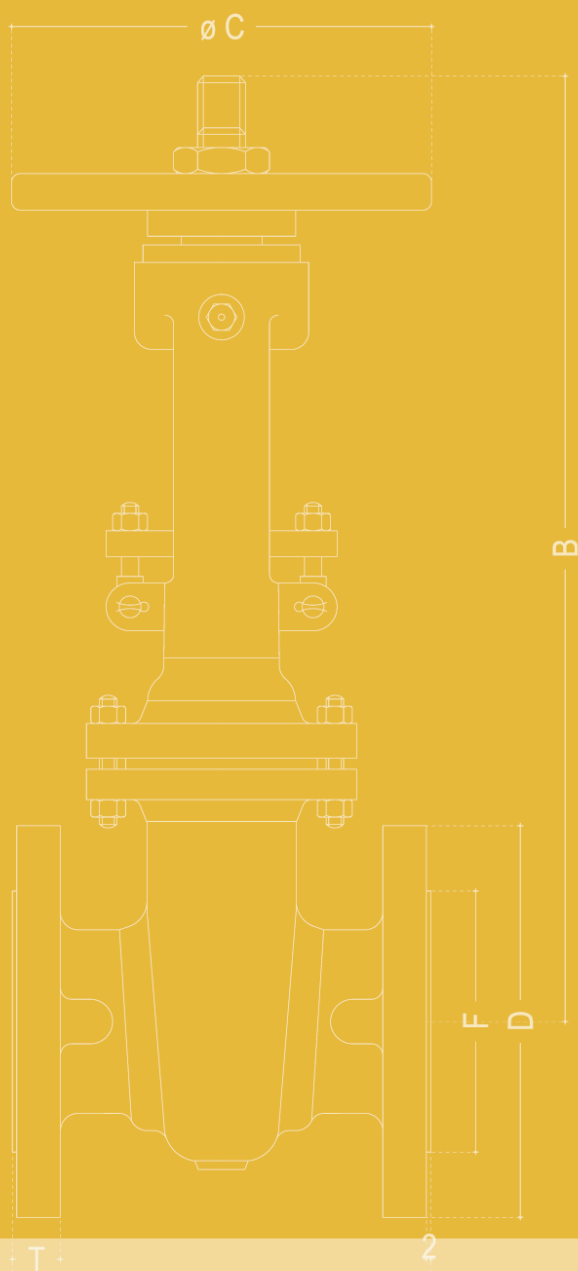
- Limit switches
- Solenoid valve
- Position Indicator
- Air filter regulator
- 3:15 PSI positioner
- 4:20mA electropneumatic positioner or 4:20mA electronic transmitter of position 30°-90° angle
- Triphase AC motor

## G&O SERIES PNEUMATIC ACTUATORS

Piston type air operators line offer a great solution to a wide range of actuation situations. They are exclusively designed to G&O series butterfly valves and can be mounted in any position. These actuators are built in aluminium and are available in three options:

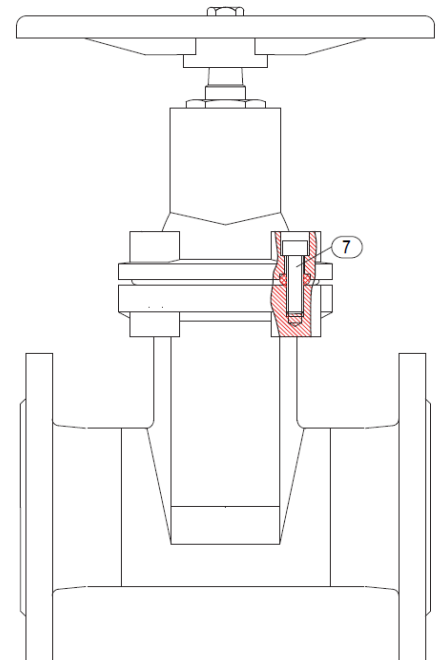
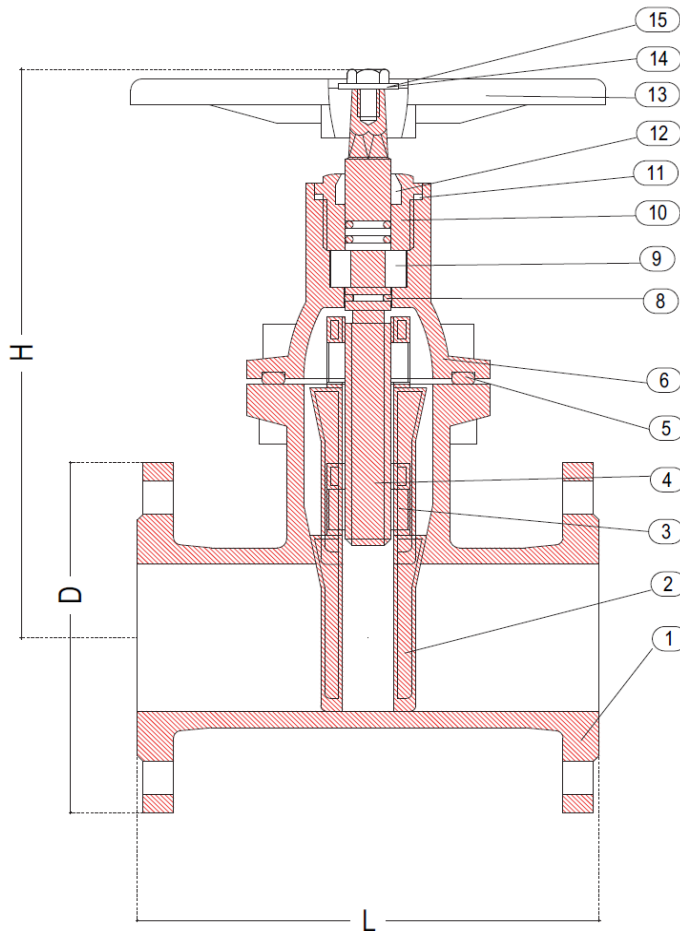
- single effect acting - fail to close (air to open)
- single effect acting - fail to open (air to close)
- double effect acting - fail to open & fail to close

Single effect acting actuators are fitted by an extractable handwheel for security.



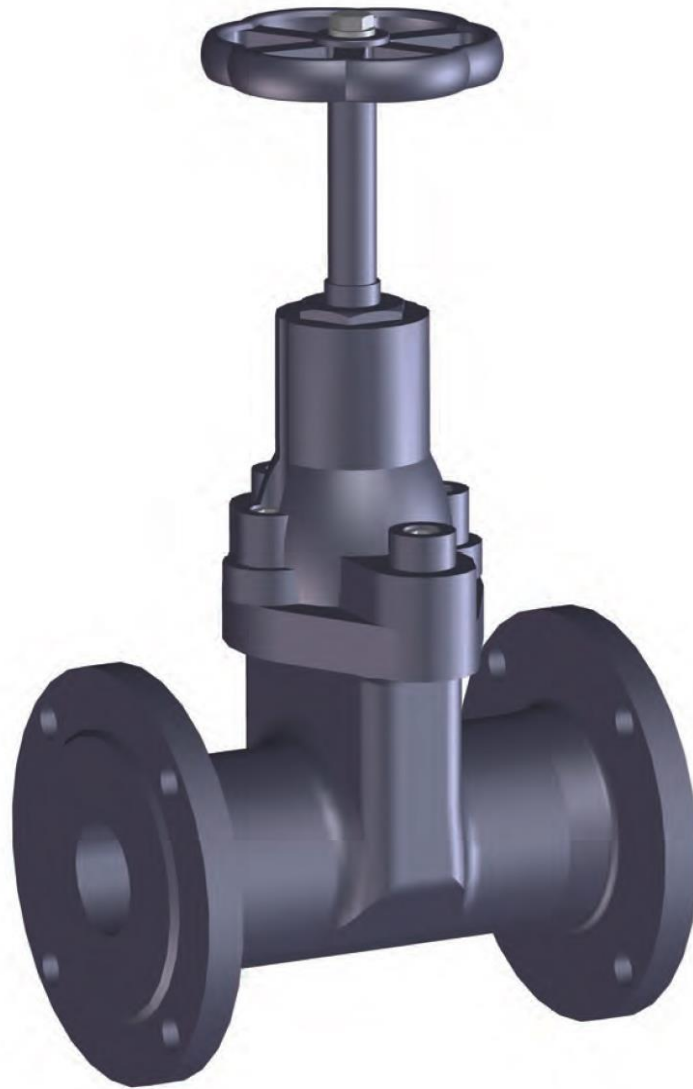
# Model GS70

## MANUAL SHORT BODY SOFT SEATED GATE VALVES



### DETAILS

- |    |                |
|----|----------------|
| 1  | BODY           |
| 2  | WEDGE          |
| 3  | STEM NUT       |
| 4  | STEM           |
| 5  | GASKET         |
| 6  | BONNET         |
| 7  | BONNET BOLT    |
| 8  | O-RING         |
| 9  | LOCALIZER RING |
| 10 | BONNET NUT     |
| 11 | MINIPAD        |
| 12 | DUST RING      |
| 13 | WHEEL          |
| 14 | WASHER         |
| 15 | BOLT           |



#### TEST PRESSURE IN BAR

PRESSURE RATING	Pn 10	PN 16
HYD SHELL	15	24
SEAT	10	16
AIR SEAT	7.0	7.0

#### WEIGHT KG

24,00  
 26,00  
 34,00  
 43,00  
 60,00  
 87,00  
 115,00  
 180,00  
 276,00  
 360,00

#### DIMENSIONS

DN	L	D	H
40	140	150	260
50	150	165	270
65	170	185	283
80	180	200	311
100	190	220	352
125	200	250	435
150	210	285	485
200	230	340	520
250	250	405	635
300	270	460	745