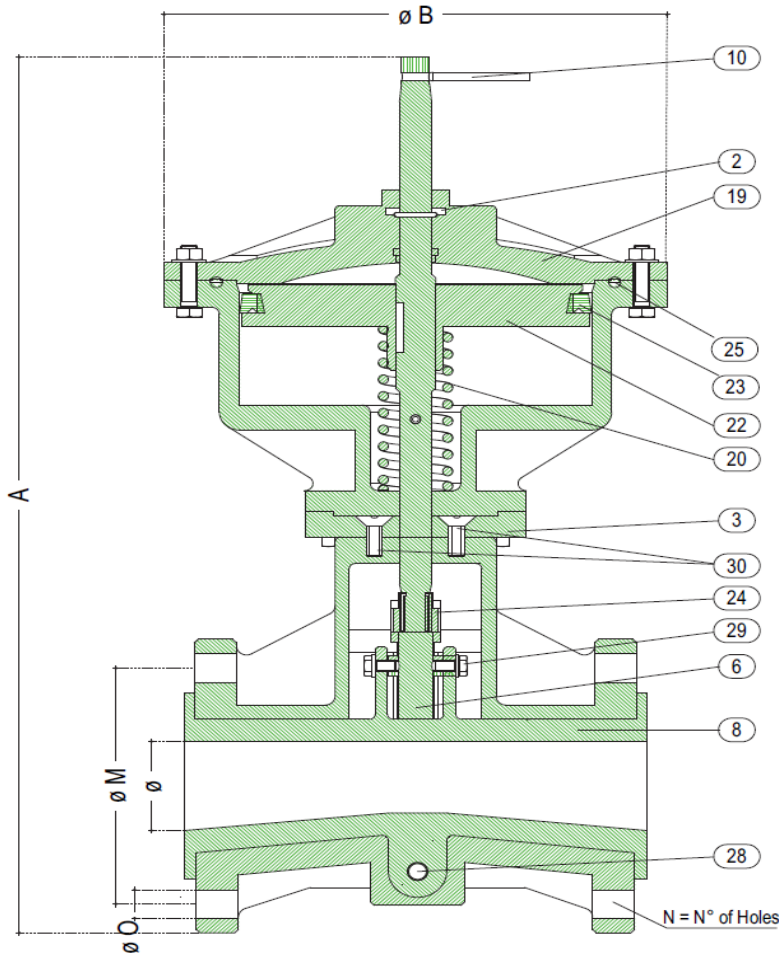
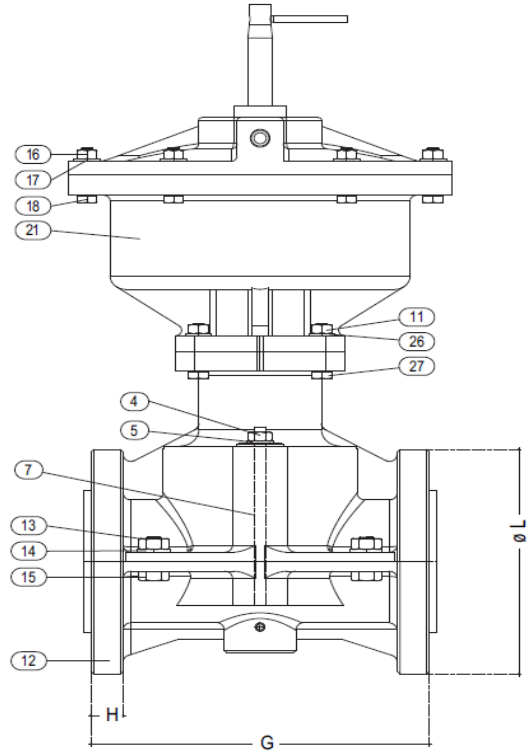


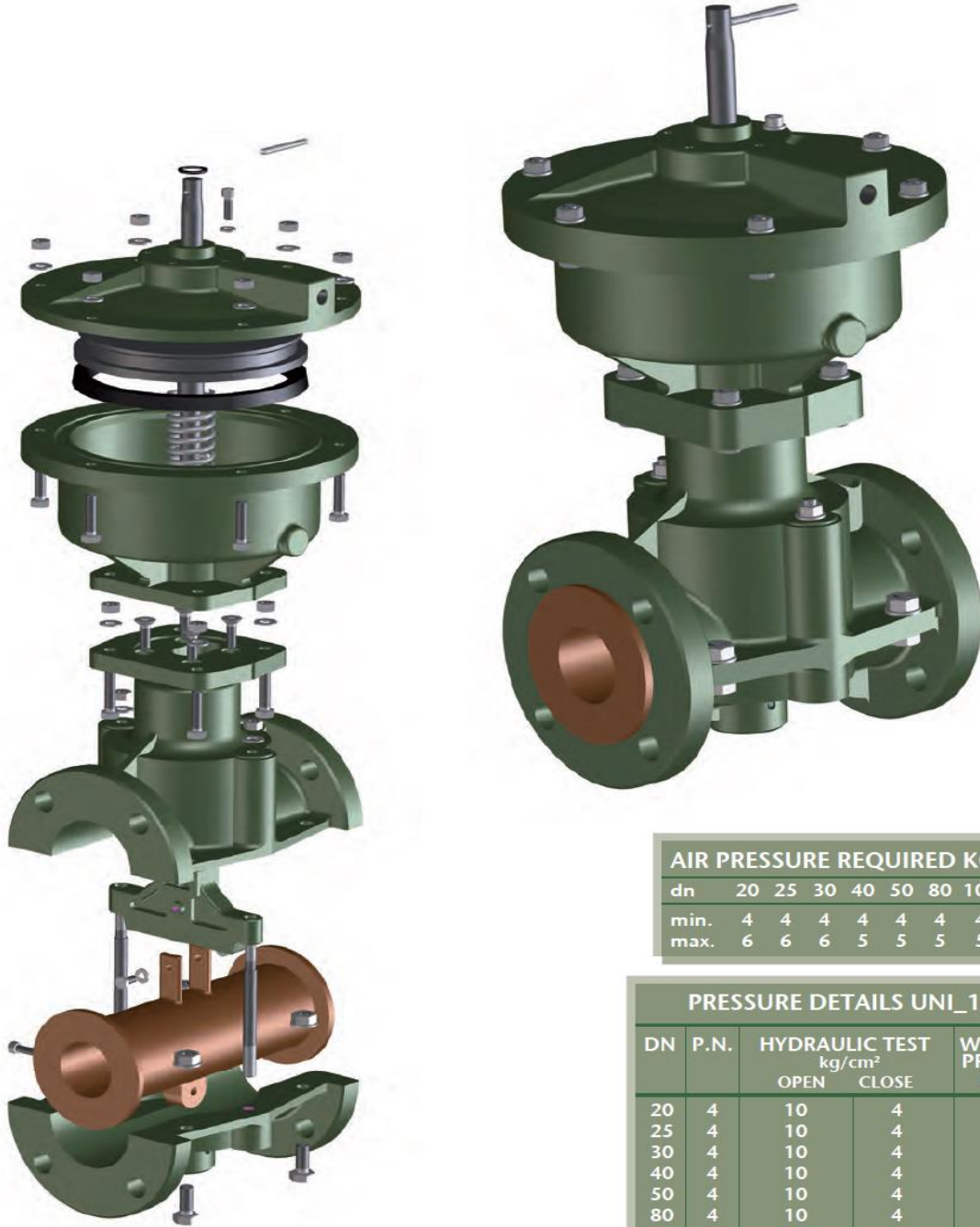
Model GS25

PINCH VALVES



DETAILS

1	GUIDE
2	"V" GASKET
3	SUPPORT
4	HEXAGON NUT
5	WASHER
6	PLUG
7	TIE ROD
8	SLEEVE
9	CLAMPING
10	SOCKET
11	HEXAGON NUT
12	VALVE UPPER-LOWER BODY
13	HEXAGON NUT
14	WASHER
15	HEXAGON BOLT
16	HEXAGON NUT
17	WASHER
18	HEXAGON BOLT
19	COVER
20	SPRING
21	CYLINDER
22	PISTON
23	"V" GASKET
24	BRONZE NUT
25	GASKET
26	WASHER
27	HEXAGON BOLT
28	SCREW SOCKET
29	CLAMPING SCREW FOR BUSHING AND WASHER
30	HEXAGON SOCKET HEAD



AIR PRESSURE REQUIRED KG/CM ²							
dn	20	25	30	40	50	80	100
min.	4	4	4	4	4	4	4
max.	6	6	6	5	5	5	5

PRESSURE DETAILS UNI_1284				
DN	P.N.	HYDRAULIC TEST kg/cm ²		WORKING PRESSURE kg/cm ²
		OPEN	CLOSE	
20	4	10	4	3,5
25	4	10	4	3,5
30	4	10	4	3,5
40	4	10	4	3,5
50	4	10	4	3,5
80	4	10	4	3,5
100	4	10	4	3,5

NOTE: For different pressure details please ask the DPT

Ø	DIMENSIONS				UNI PN 10				ASA 150			
	A	B	G	H	L	M	N	O	L	M	N	O
20	291	180	140	14	105	75	4	14	98	70	4	16
25	324	200	150	14	115	85	4	14	108	80	4	16
30	385	215	170	16	140	100	4	18	118	90	4	16
40	432	250	190	18	150	110	4	18	127	98	4	16
50	492	250	220	21	165	125	4	18	152	120	4	19
80	561	285	300	22	200	160	4	18	190	152	4	19
100	728	335	340	22	220	180	8	18	229	190	8	19