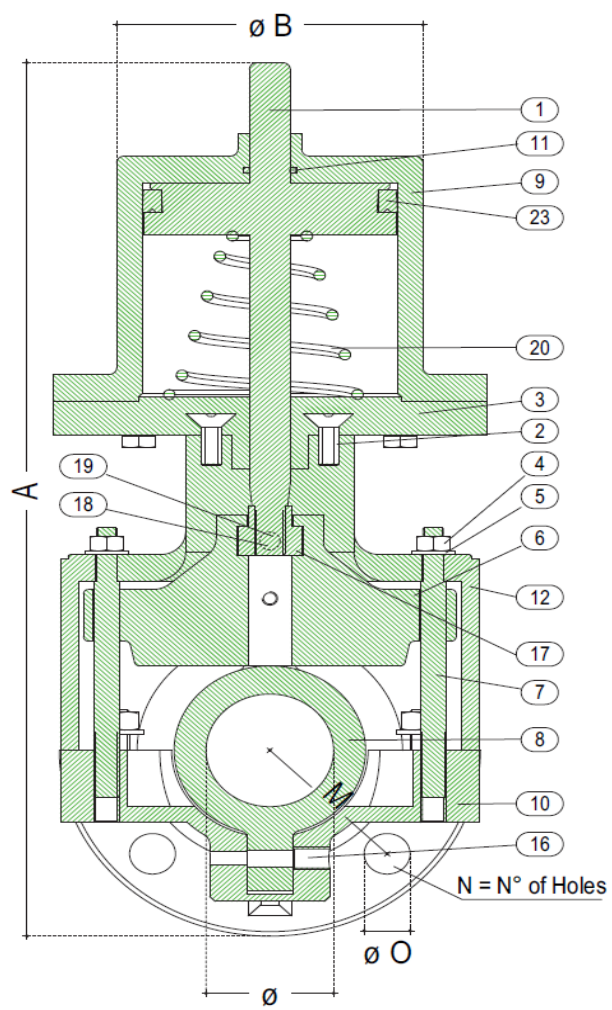
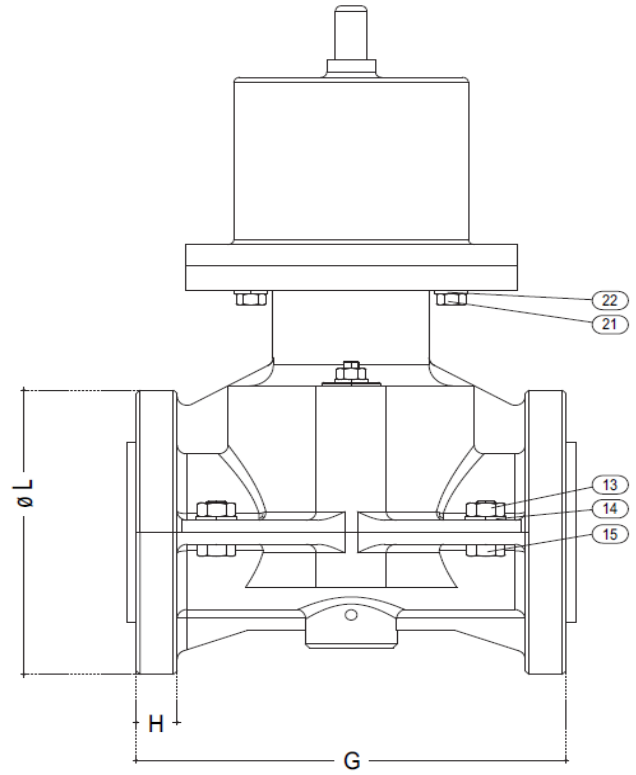


Model GS22

PINCH VALVES



DETAILS	
1	DRIVE PIN-PISTON
2	HEXAGON SOCKET HEAD
3	SUPPORT
4	HEXAGON NUT
5	WASHER
6	PLUG
7	TIE ROD
8	SLEEVE
9	CYLINDER
10	VALVE LOWER BODY
11	GASKET
12	VALVE UPPER BODY
13	HEXAGON NUT
14	WASHER
15	HEXAGON BOLT
16	SCREW SOCKET
17	BRONZE NUT
18	WASHER
19	CLAMPING SCREW FOR BUSHING
20	SPRING
21	HEXAGON BOLT
22	WASHER
23	"V" GASKET



PRESSURE DETAILS UNI_1284				
DN	P.N.	HYDRAULIC TEST kg/cm ²		WORKING PRESSURE kg/cm ²
		OPEN	CLOSE	
20	5	10	5	4
25	5	10	5	4
30	5	10	5	4
40	5	10	5	4
50	5	10	5	4
80	5	10	5	4
100	5	10	5	4
150	5	10	5	4

NOTE: For different pressure details please ask the DPT

AIR PRESSURE REQUIRED KG/CM ²								
dn	20	25	30	40	50	80	100	150
min.	4	4	4	4	4	4	4	4
max.	6	6	6	6	6	6	6	6

WEIGHT KG ALUMINIUM
2,300
3,200
4,200
6,000
8,000
14,000
31,000
49,000

DIMENSIONS						UNI PN 10				ASA 150			
Ø	A	B	G	H		L	M	N	O	L	M	N	O
20	240	80	140	14		105	75	4	14	98	70	4	16
25	278	100	150	14		115	85	4	14	108	80	4	16
30	317	100	170	16		140	100	4	18	118	90	4	16
40	366	118	190	18		150	110	4	18	127	98	4	16
50	395	118	220	21		165	125	4	18	152	120	4	19
80	482	145	300	22		200	160	4	18	190	152	4	19
100	698	162	340	22		220	180	8	18	229	190	8	19
150	866	220	470	20		285	240	8	22	280	241	8	22

