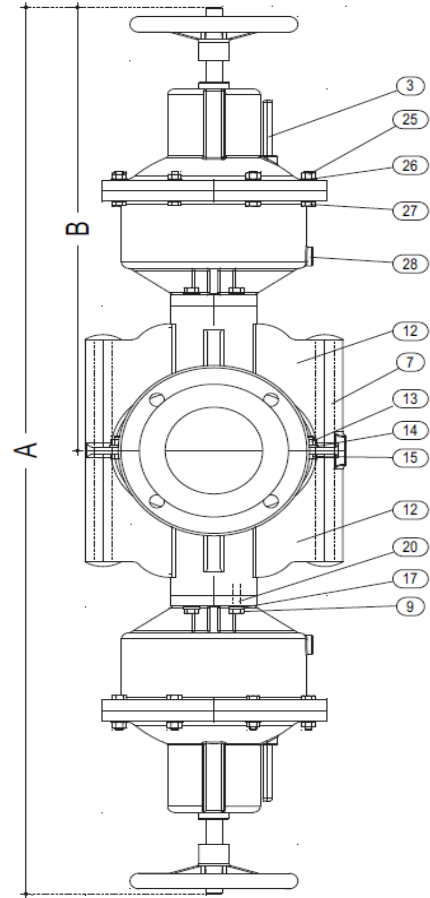
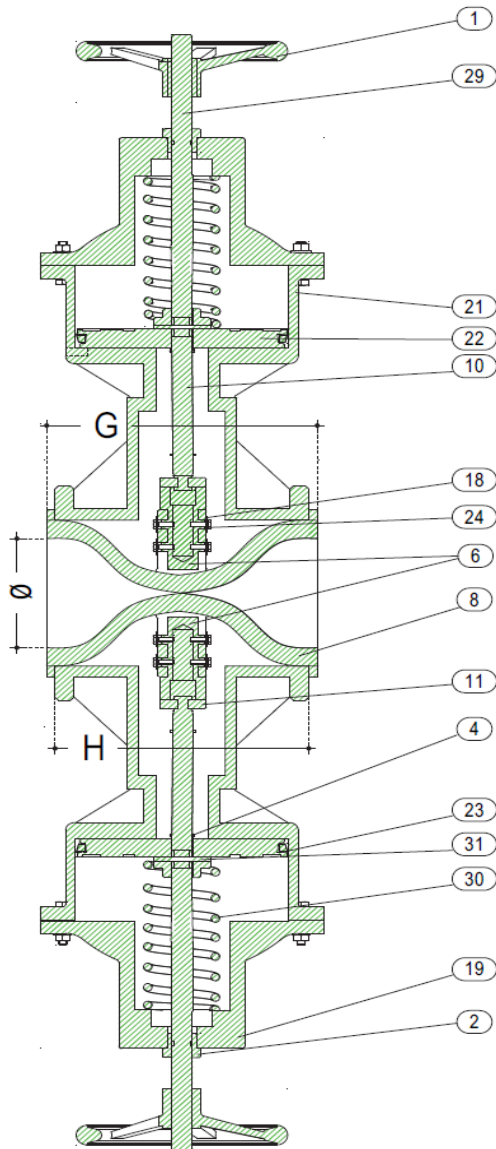


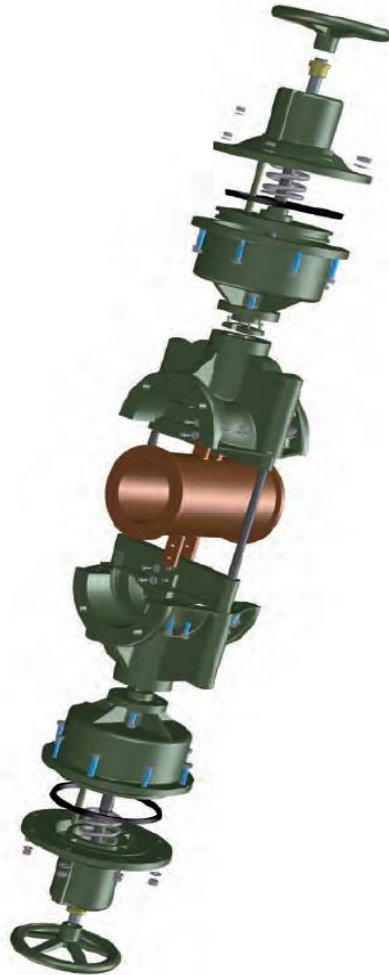
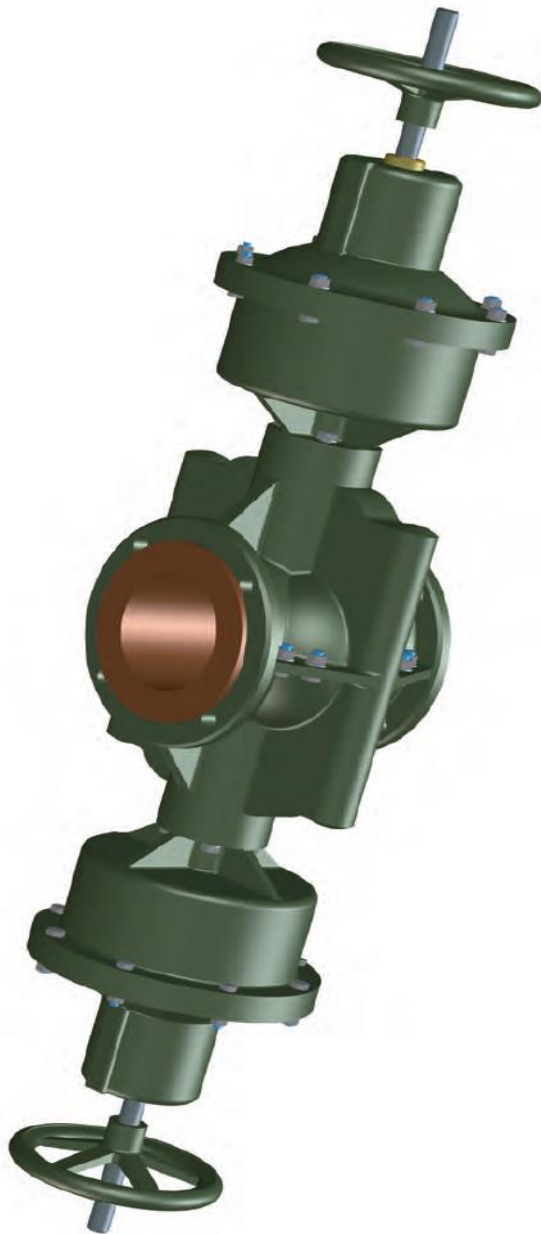
# Model GS20

## PINCH VALVES



### DETAILS

1	WHEEL AND BUSHING
2	SUPPORT RING
3	GUIDE PIN
4	"V" GASKET
6	PLUG
7	TIE ROD
8	RUBBER SLEEVE
9	HEXAGON NUT
10	DRIVE PIN
11	RETURN BUSHING
12	VALVE BODY
13	HEXAGON NUT
14	WASHER
15	HEXAGON BOLT
16	CLAMPING SCREW FOR BUSHING
17	WASHER
18	WASHER
19	COVER
20	STUD BOLT
21	CYLINDER
22	PISTON
23	"V" GASKET
24	CLAMPING
25	HEXAGON NUT
26	WASHER
27	HEXAGON BOLT
28	INSIDE PIPE FITTING
29	LEAD SCREW
30	SPRINGS
31	SOCKET



**AIR PRESSURE REQUIRED KG/CM<sup>2</sup>**

dn	50	60	70	80	90	100	125	150	175	200
min.	3	3	3	3,5	3,5	3,5	3,5	4	4	4
max.	5	5	5	5	5	5	5	5	5	5

**PRESSURE DETAILS UNI\_1284**

DN	P.N.	HYDRAULIC TEST kg/cm <sup>2</sup>		WORKING PRESSURE kg/cm <sup>2</sup>
		OPEN	CLOSE	
50	4,5	10	4,5	4
60	4,5	10	4,5	4
70	4	10	4	3,5
80	4	10	4	3,5
90	3,5	10	3,5	3
100	3,5	10	3,5	3
125	3	10	3	2,5
150	3	10	3	2,5
175	2,5	10	2,5	2
200	2	10	2	1,5

NOTE: For different pressure details please ask the DPT

**WEIGHT KG**

ALUMINIUM	C.I.
17,000	25,000
22,000	32,000
27,000	39,000
35,000	48,000
45,000	60,000
51,000	73,000
64,000	95,000
80,000	120,000
96,000	150,000

**DIMENSIONS**

Ø	DIMENSIONS			
	A	B	G	H
50	800	400	176	160
60	860	430	194	180
70	920	460	206	190
80	980	490	215	196
90	1150	575	250	232
100	1200	600	275	260
125	1300	650	300	280
150	1450	725	330	300
175	1540	770	355	335
200	1780	890	375	350