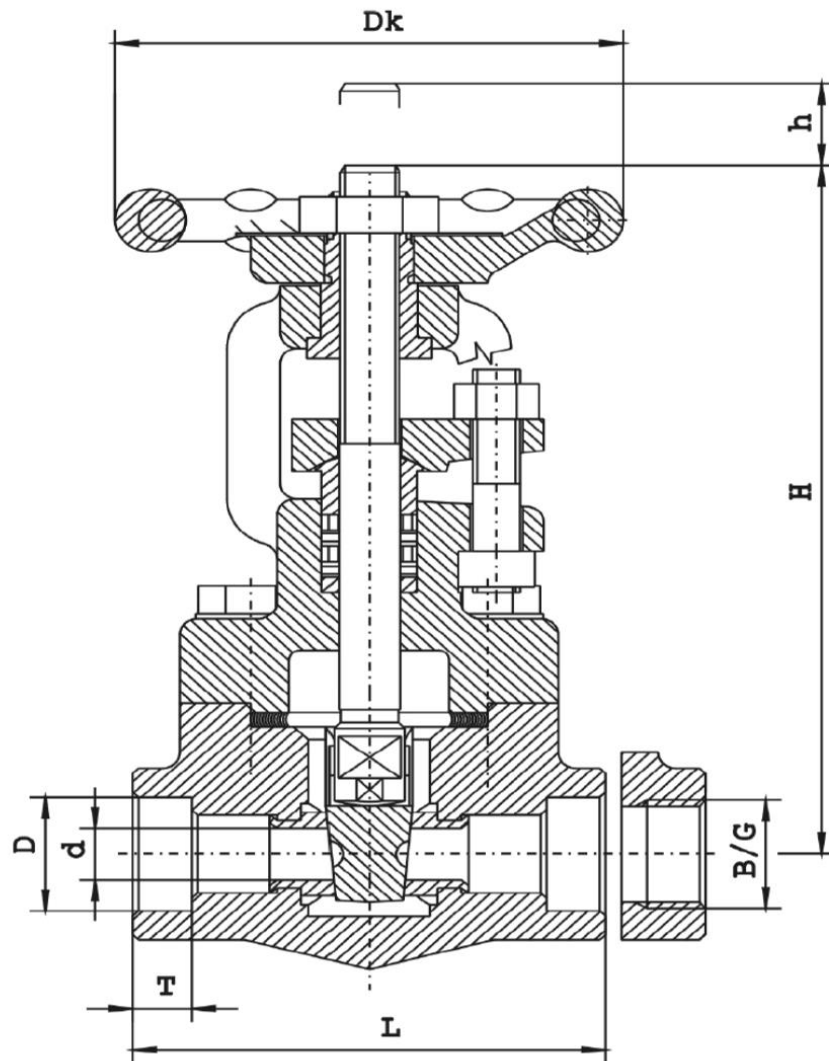


# Gate Valve

CLASS 800

ZK800

DN 1/4" - 2"/800 lbs/Tmax 425 °C



**Dimensions:**

ND	B	G	d	D	L	T	H	h	D <sub>K</sub>	Weight
mm										kg
1/4	-	-	10	14,1	80	10	132	15	80	1,8
3/8	NPT 3/8	3/8	10	17,6	80	10	132	15	80	1,8
1/2	NPT 1/2	1/2	10	21,9	80	10	132	15	80	1,8
3/4	NPT 3/4	3/4	14	27,4	90	13	134	18	80	2,1
1	NPT 1	1	18	34,2	110	13	171	22	100	3,7
1 1/2	NPT 1 1/2	1 1/2	27	48,6	134	19	231	34	180	9,6
2	NPT 2	2	34	61,1	134	22	242	43	180	10,6

**Gate Valve**  
**CLASS 800**  
**ZK800**

DN 1/4" – 2"/800 lbs/Tmax 425 °C

**Application:**

Gate valves can be installed in horizontal or vertical position. As two-ways type can be used for closing or opening the medium flow. The gate valves are not suitable for flow regulation.

**Medium:**

Gate valves are applicable for products of crude oil refinement ,petroleum, heating oil, water, steam, and other non-aggressive liquids and gases in temperature range –29 °C to 425 °C.

**Application range:**

Nominal pressure [psig] [bar]	Maximum operating pressure at medium temperature [°C]						
	- 29 to 38°C	100°C	150°C	200°C	300°C	350°C	425°C
<b>CLASS 800</b> <b>PN 136</b>	<b>1975</b> 136	<b>1800</b> 123	<b>1750</b> 120	<b>1690</b> 117	<b>1460</b> 103	<b>1420</b> 98	<b>1100</b> 77

Detailed informations can be found on the graph "Fitting's permissible working parameters for applied materials" (layout p/t) in part IV of the catalogue.

**Materials:**

Description	Material
<b>Body</b>	A105
<b>Body seat</b>	X17CrNi16-2
<b>Bonnet</b>	A105
<b>Stem</b>	X17CrNi16-2
<b>Wedge</b>	X30Cr13
<b>Packing</b>	Graphite

**Remarks:**

- Design in accordance with API STANDARD 602.
- Connection types - SW - socket welding ends acc. to ASME / ANSI B16.11
  - BW - butt-welding ends acc. to ASME / ANSI B16.25.
  - NPT- threaded ends acc. to ASME / ANSI B1.20.1.
  - G - threaded ends (pipe thread)
- Tests and requirements acc. to API STANDARD 598.
- Quality certificate ,depends on customer requirements acc. to PN-EN 10204: 2005.

