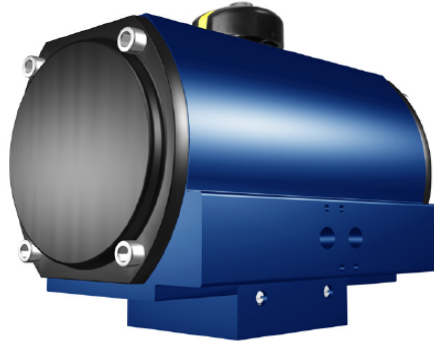


## Actuator Type 2 - Technical Data, Summary



WireMatic actuators are pneumatic quarter turn actuators based on double rack and pinion design.

The Type 2 actuator is generally recommended to “large” Butterfly valves.

**Material, standard (outside)**

- Anodized Aluminum, Black
- CNI, Chemically Nickel/PTFE Impregnated for increased corrosion resistance
- Other treatments upon request

**Movement**

- 0° to 90°

**End Stop Adjustment**

Double End Stop Adjustments, Open and Closed position, located outside the pressurized zone at the BAK (Body Adaptor Kit)

Over travel

- Open: 3°
- Closed, size 8 and 12: 2°
- Closed, size 20 to 150: 3°

**Sizes**

- 35, 55, 70, 100 and 150

**Torque**

Linear torque, ie a Double Acting (DA) Actuator has the same torque over the entire movement

**Torque Output, Double Acting (DA) at 6 bar/80 psi**

- 374 to 1655 Nm
- 3055 to 13425 in.lbs

**Torque Output, Spring Return (SR) at 6 bar/80 psi**

- 133 to 586 Nm
- 1676 to 4758 in.lbs

**Operating Pressure**

- DA: 2-10 bar / 30-145 psi
- SR: 2-10 bar / 30-145 psi. When the Actuators will be used at Operating pressures below 5.5 bar / 79.8 psi, we recommend that you contact your WM distributor.

## Actuator Type 2 - Technical Data, Summary

### Drive Medium

- Standard: Air (Dry or Lubricated) or inert gases (non-dangerous fluids)
- Options (require rebuilding): Oxygen, Hydraulic Oil or Water

### Temperature Range, Standard execution (Buna Nitrile, NBR O-seals)

- - 30° to + 80°C
- - 22° to + 175°F

### Temperature Range, High temperature (Viton O-seals)

- - 20° to + 140°C
- - 4° to + 284°F

### Temperature Range, Low temperature

- -45° to +60°C
- -49° to +140°F

### Temperature Range, Arctic temperature

- -50° to +60°C
- -58° to +140°F

### Stroke, Double Acting (DA)

Looking at the front of the Actuator, Port A is on the left side and Port B is on the right

Port A: Air to Open (Anti-clockwise)

Port B: Air to Close (Clockwise)

### Stroke, Spring Return (SR)

Port A: Air to Open (Anti-clockwise, compressing springs)

Port B: Exhaust Port

Setting from factory: Fail Close (FC), clockwise closing. To change to Fail Open (FO): see separate instructions

### Max number of springs

A Spring Kit consists of 4 outer + 4 inner springs located inside the piston racks. To adjust for different Air Pressure; reduce the number of springs.

### Drive shaft

Body Adaptor Kit (BAK): standard square drive – ISO 5211

Common Options: Double D (D-D) or Key drive.

### Standard Connections

Solenoid valves – Namur

Fitting accessories – ISO 5211, DIN 3337, Namur

Body Adaptor Kit (BAK) according to agreed execution

### Lubricants, recommended

Springs and piston rack segments: Statoil Molyway LI 712 or similar

O-rings and plastic parts: Statoil Uniway LIX 42PA or similar

### Standards and Certificates

The Actuators are designed to and in compliance with several different standards. They also have different types of certificates, see separate information.