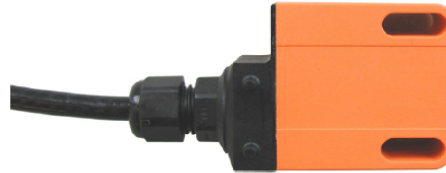


# Limit Switch Inductive sensor Type IFM IN0109

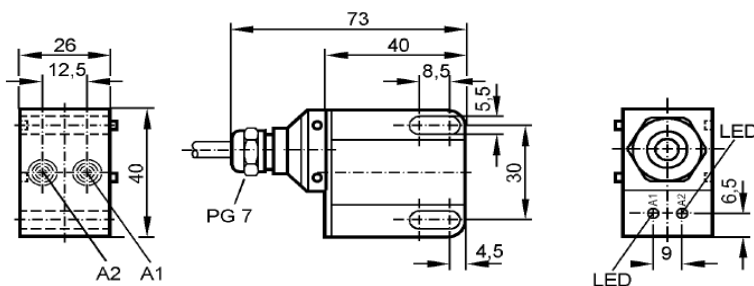
- IND2004DABOA
- Inductive sensor
- Cable
- Sensing range 4 mm
- non-flush mountable



## TECHNICAL DATA

Electrical design	AC/DC
Output	2 x normally open
Operating voltage (V)	20...250 AC/DC
Current rating (continuous) (mA)	350 AC (...50 °C) / 250 AC (...80 °C) / 100 DC
Current rating (peak) (mA)	$\hat{i}$ : 2.2 A (20 ms / 0.5 Hz)
Minimum load current (mA)	5
Short-circuit proof	No
Reverse polarity protection	No
Overload protection	No
Voltage drop (V)	< 6.5
Leakage current (mA)	< 2.5 (AC 250 V) / < 1.3 (AC 110 V) / < 0.8 (DC 24 V)
Real sensing range (mm)	4 ± 10 %
Operating distance (mm)	0...3.25
Switch-point drift (% of Sr)	-10...10
Hysteresis (% of Sr)	3...15
Switching frequency (Hz)	25 AC / 50 DC
Correction factors	mild steel = 1 / stainless steel approx. 0.7 / brass approx. 0.5 / Al approx. 0.4 / Cu approx. 0.3
Ambient temperature (°C)	-25...80
Protection	IP 67, II
EMC	EN 60947-5-2 EN 55011: class B
Housing materials	PC (polycarbonate)
Function display Switching status LED	2 x yellow
Connection	2 m; 4 x 0.5 mm <sup>2</sup>
Weight (kg)	0.221

## DIMENSION



## WIRING

