


# Limit Switch Inductive sensor Type IFM NS5002

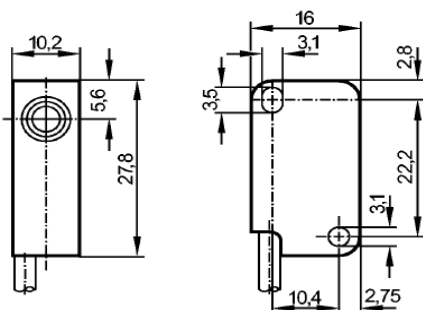
- IS2002-N/1D/2G
- Cable
- ATEX approval
- Group II, category 1D
- Group II, category 1G/2G
- Sensing range 2 mm
- flush mountable



## TECHNICAL DATA

Electrical design	Connection to certified intrinsically safe circuits with the max. values $U = 15 \text{ V} / I = 50 \text{ mA} / P = 120 \text{ mW}$
Output	normally closed
Nominal voltage (V)	8.2 DC (1k $\Omega$ )
Supply voltage (V)	7.5...30 DC when used outside the hazardous area
Current rating (mA)	< 30 when used outside the hazardous area
Current consumption (mA)	< 1 *
Internal capacitance (nF)	< 80
Internal inductance ( $\mu\text{H}$ )	< 110
Real sensing range (mm)	$2 \pm 10 \%$
Switch-point drift (% of Sr)	-10...10
Hysteresis (% of Sr)	1...15
Switching frequency (Hz)	800
Correction factors	mild steel = 1 / stainless steel approx. 0.7 / brass approx. 0.5 / Al approx. 0.4 / Cu approx. 0.3
Ambient temperature ( $^{\circ}\text{C}$ )	-20...70
Protection	IP 67
Shock / vibration resistance	30g (11 ms) / 10-55 Hz (1 mm)
EMC	EN 60947-5-6
MTTF (Years)	4737
Approval	PBT 01 ATEX 2191 BVS 04 ATEX E153 IECEX BVS 06.0003
Marking of the unit	II 2G EEx ia IIC T6 Ta: -20...70 $^{\circ}\text{C}$ II 1D Ex iaD 20 T 90 $^{\circ}\text{C}$ Ta: -20...70 $^{\circ}\text{C}$ Ex ia IIC T6 Ta: -20...70 $^{\circ}\text{C}$ 
Housing materials	PBT
Connection	PVC cable / 2 m; 2 x 0.14 mm $^2$
Weight (kg)	0.089
Remarks	*) damped; (> 2.1 mA undamped)

## DIMENSION



## WIRING

