

Limit Switch Inductive sensor Type IFM IS5001

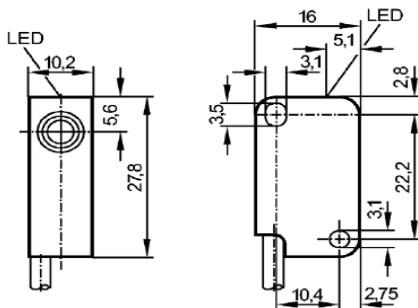
- IS-3002-BPOG
- Inductive sensor
- Cable
- Sensing range 2 mm
- flush mountable



TECHNICAL DATA

Electrical design	DC PNP
Output	normally closed
Operating voltage (V)	10...36 DC
Current rating (mA)	200
Short-circuit protection	no
Reverse polarity protection	no
Overload protection	no
Voltage drop (V)	< 1
Current consumption (mA)	< 15 (24 V)
Real sensing range (mm)	2 ± 10 %
Operating distance (mm)	0...1.6
Switch-point drift (% of Sr)	-10...10
Hysteresis (% of Sr)	1...15
Switching frequency (Hz)	800
Correction factors	mild steel = 1 / stainless steel approx. 0.7 / brass approx. 0.4 / Al approx. 0.3 / Cu approx. 0.2
Ambient temperature (°C)	-25...80
Protection	IP 67
EMC	EN 60947-5-2 EN 55011: class B
MTTF (Years)	3044
Housing materials	PBT
Function display Switching status	yellow
Connection	PVC cable / 2 m; 3 x 0.14 mm ²
Weight (kg)	0.043
Remarks	cULus - Class 2 source required max. tightening torque 0.5 Nm with washer

DIMENSION



WIRING

