

## Solenoid Valve Joucomatic Type G356 3/2 1/8"

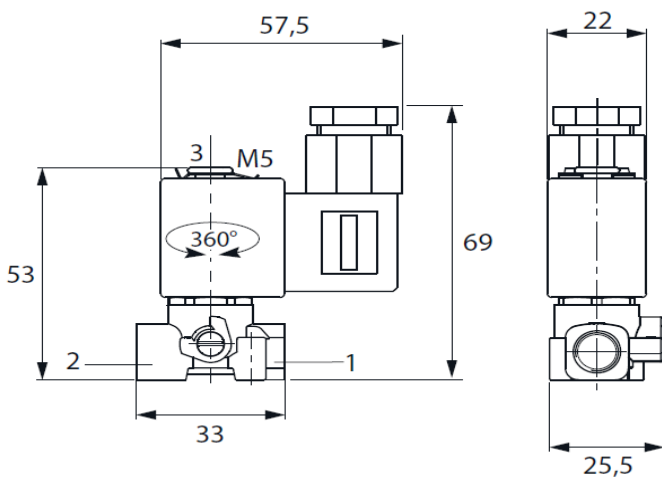
- Compact valve intended for single-acting actuator control
- Coils interchangeable without dismantling the valve
- Valves do not require a minimum operating pressure
- The solenoid valves satisfy all relevant EC directives



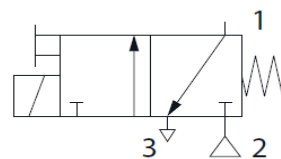
### TECHNICAL DATA

Operating differential pressure (bar)	0 - 15
Air inlet	G 1/8"
Body material	Brass
Internal parts and springs	Stainless steel
Seat	Brass
Sealing material	FPM (flouroelastomer)
Coil insulation	Class F
Connector specification	DIN 43650, standard B
Standard voltages	DC (=) 24V / AC (-) 24V-115V-230V/50Hz
Electrical safety	IEC 335
Weight (g)	156
Manual override	As a standard feature
Protection class	IP65 (with cable plug)
Ambient temperature (°C)	-10 to +60
Media	air, inert gas

### DIMENSIONS



### AIR SCHEMATIC



### CABLE CONNECTOR

